The background features several thin, light gray lines. A vertical line runs down the left side of the page. Two diagonal lines intersect each other and the vertical line, forming a large, irregular shape that resembles a stylized letter 'A' or a geometric composition. The lines are thin and extend across the page, creating a minimalist architectural or geometric aesthetic.

ARCHITECTURE

MANCHESTER PHOTOGRAPHY TRIP

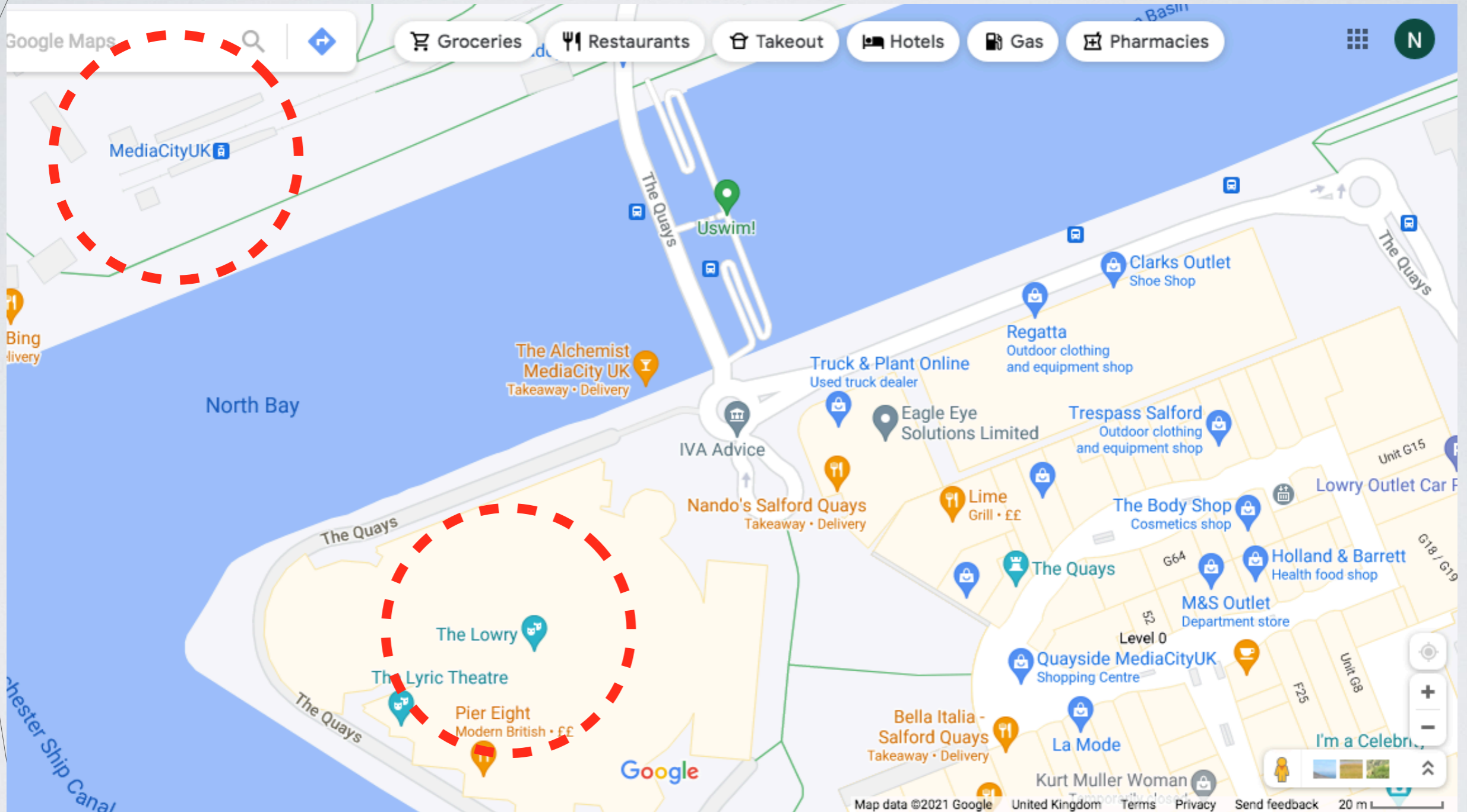
THURSDAY 6TH OCTOBER 2022

FOR THE PHOTOGRAPHY TRIP YOU WILL NEED TO HAVE ACCESS TO YOUR **OWN CAMERA**. THIS CAN BE YOUR PHONE IF IT HAS A GOOD QUALITY CAMERA. WE WILL BE ABLE TO LOAN A SMALL NUMBER OF CAMERAS OUT FROM COLLEGE (WHERE NEEDED) PLEASE LET YOUR TEACHER KNOW IN ADVANCE OF THE TRIP.

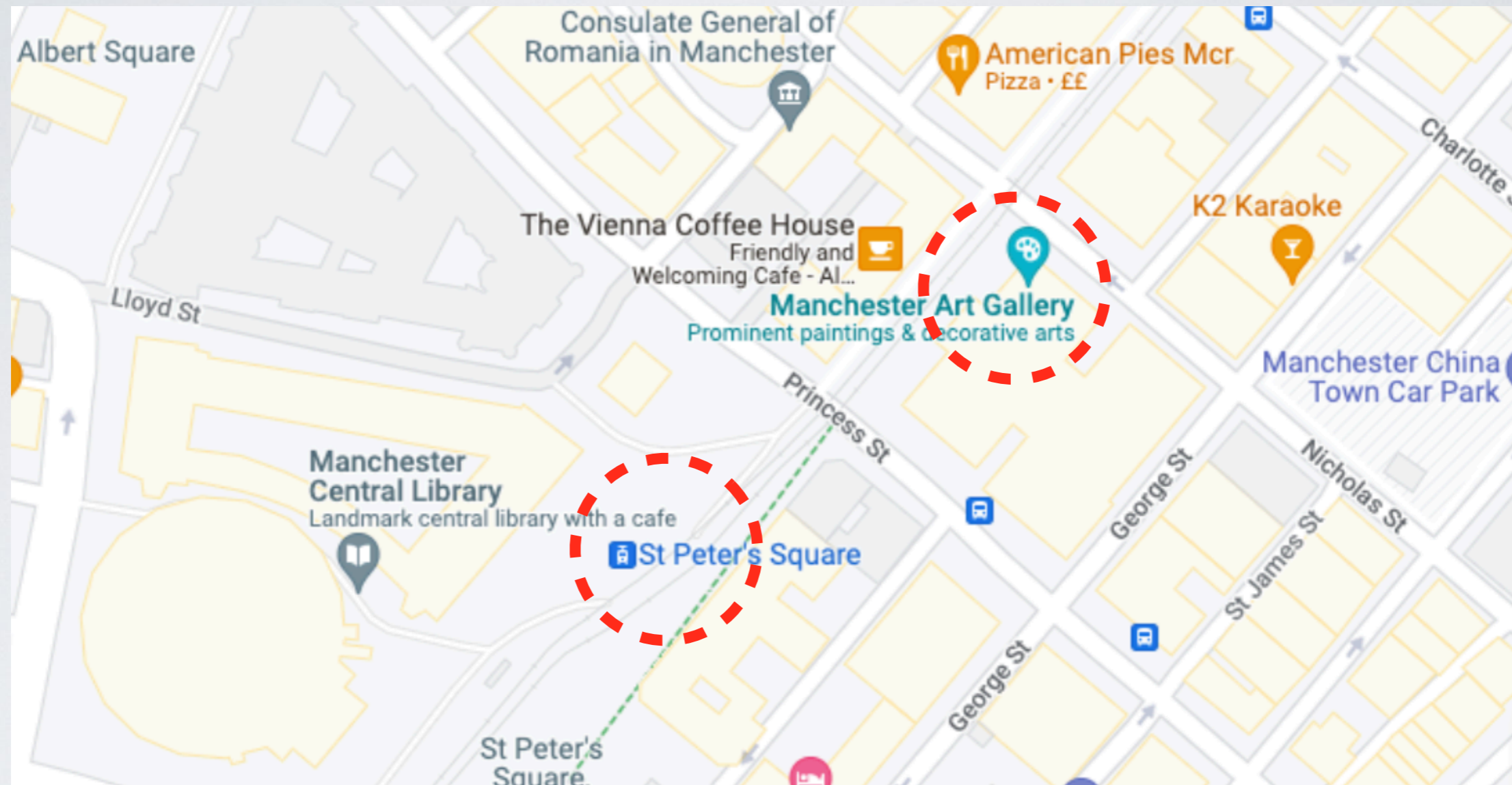
MAKE SURE YOUR CAMERA / PHONE IS **FULLY CHARGED** BEFORE THE TRIP, YOU WILL ALSO NEED ENOUGH **STORAGE** TO TAKE THE PHOTOGRAPHS, EITHER ON YOUR CAMERA CARD OR PHONE.

YOU WILL NEED TO TAKE A **MINIMUM OF 200 PHOTOGRAPHS** DURING THE DAY, OFTEN MORE, DON'T DELETE ANY, YOU WILL NEED THESE FOR YOUR CONTACT SHEETS.

REGISTRATION POINT ONE



REGISTRATION POINT TWO



ARCHITECTURE EXAMPLES- EDITS & SELECTIONS



SEE A&D WEBSITE FOR STUDENT GALLERY EXAMPLES

ARCHITECTURE EXAMPLES- EDITS & SELECTIONS



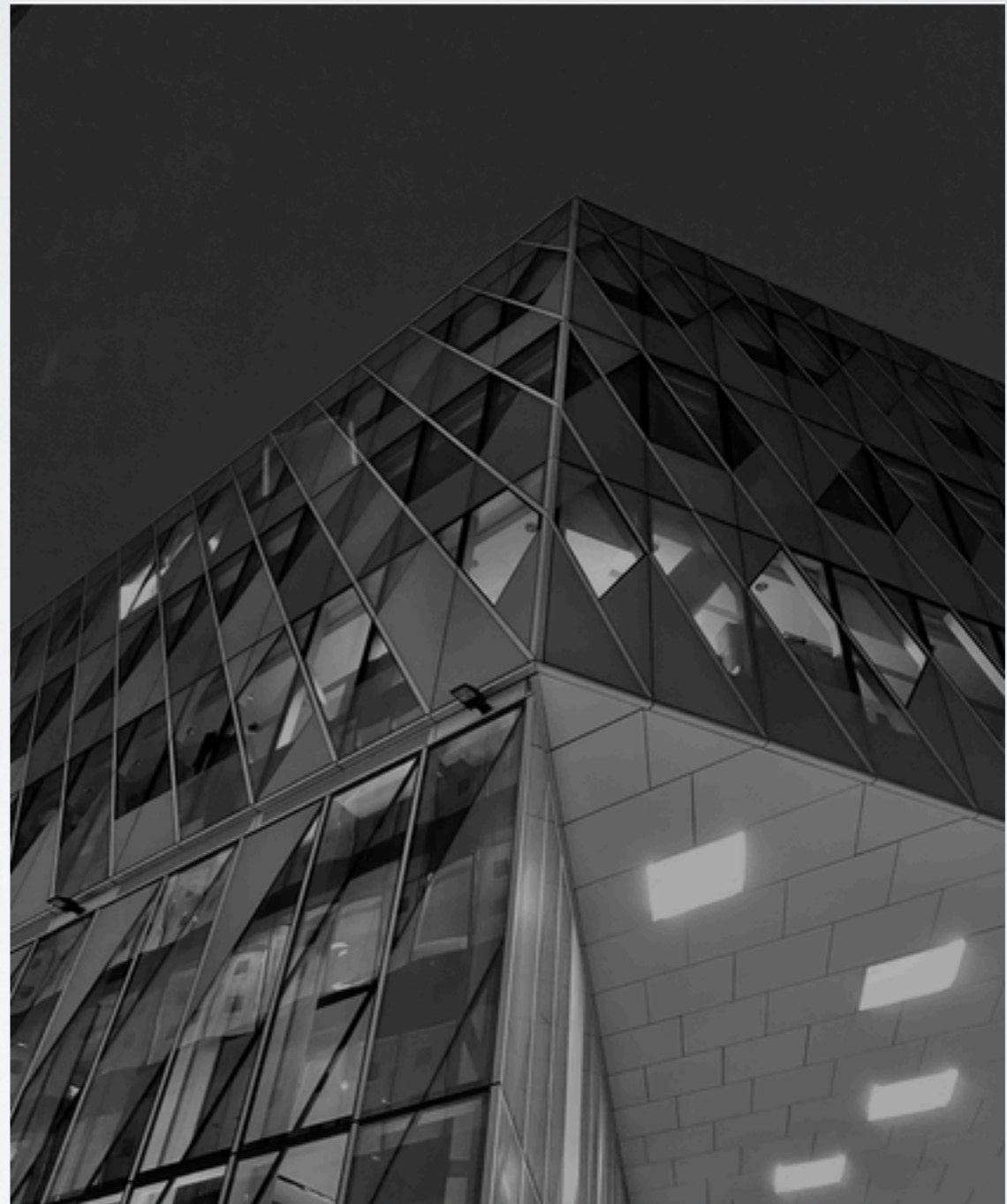
SEE A&D WEBSITE FOR STUDENT GALLERY EXAMPLES

ARCHITECTURE EXAMPLES- EDITS & SELECTIONS



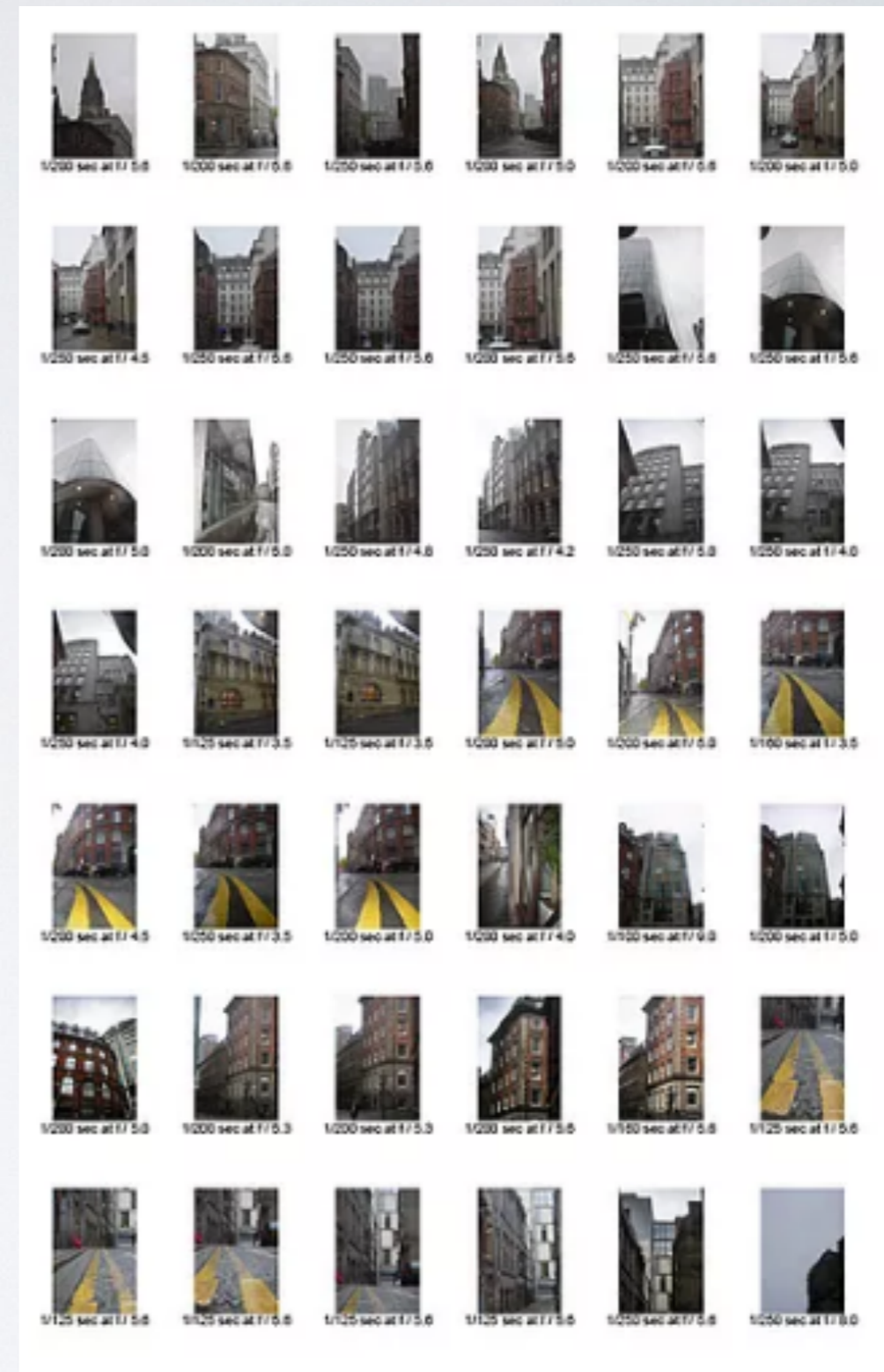
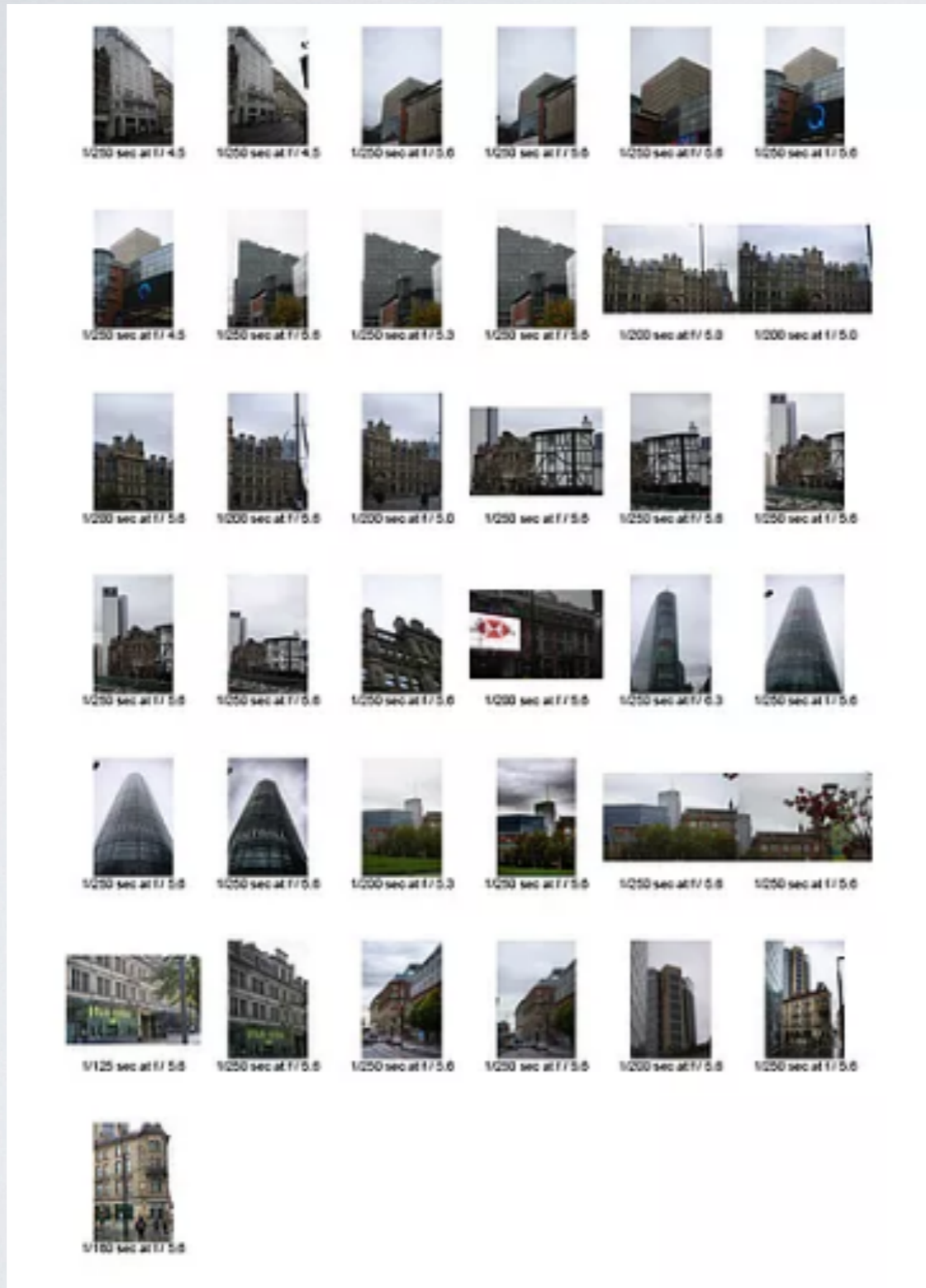
SEE A&D WEBSITE FOR STUDENT GALLERY EXAMPLES

ARCHITECTURE EXAMPLES- EDITS & SELECTIONS

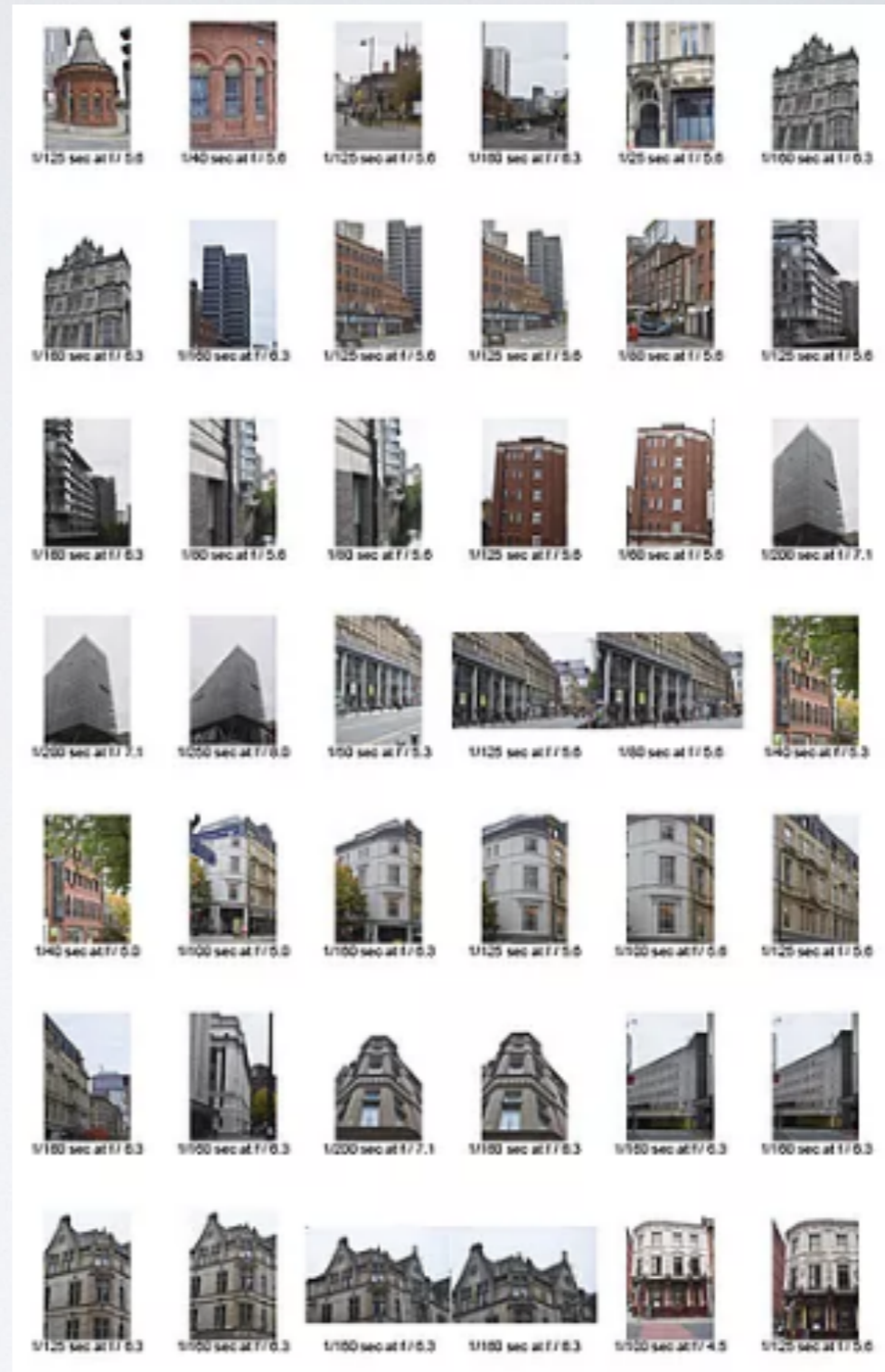
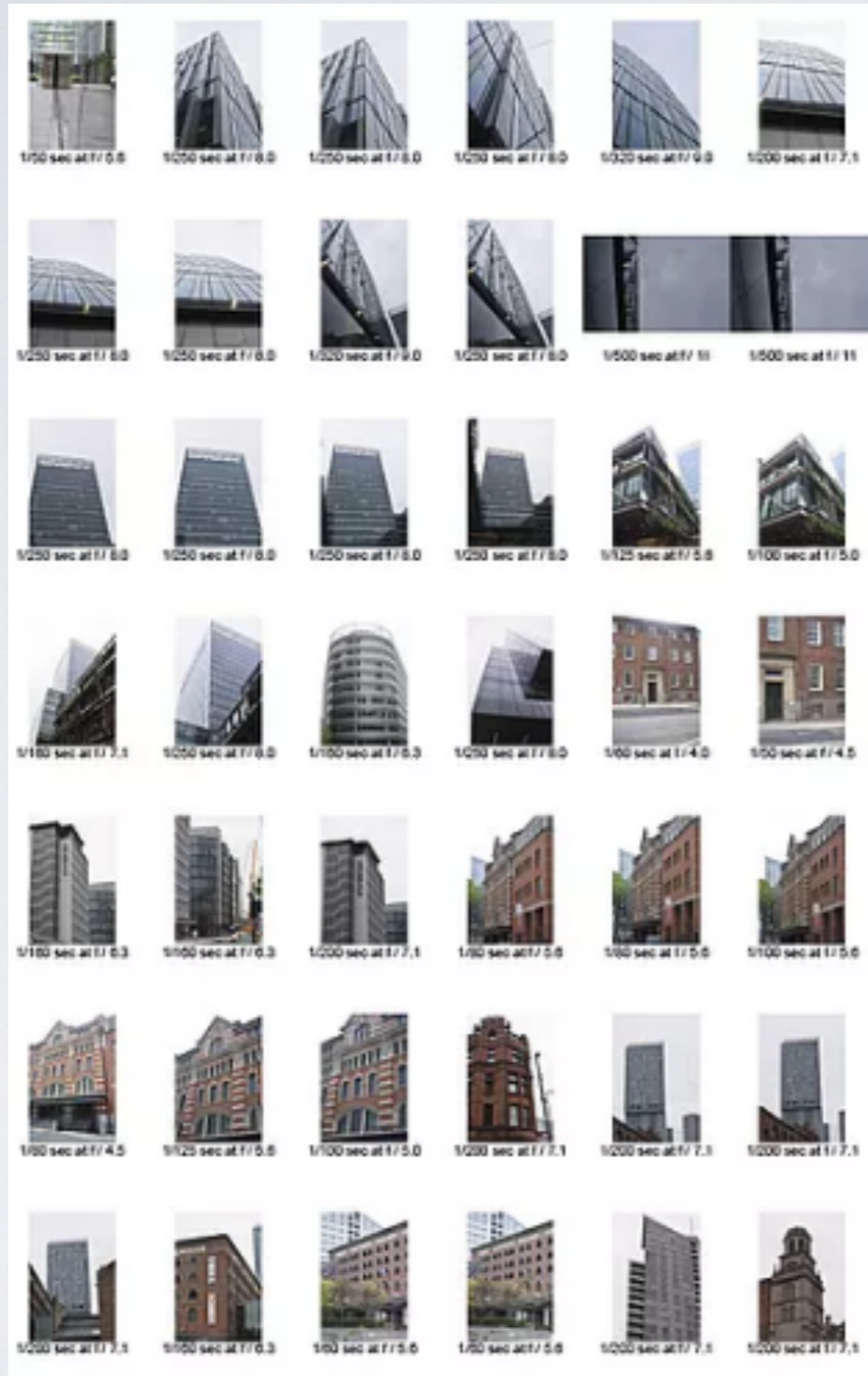


SEE A&D WEBSITE FOR STUDENT GALLERY EXAMPLES

CONTACT SHEET EXAMPLES

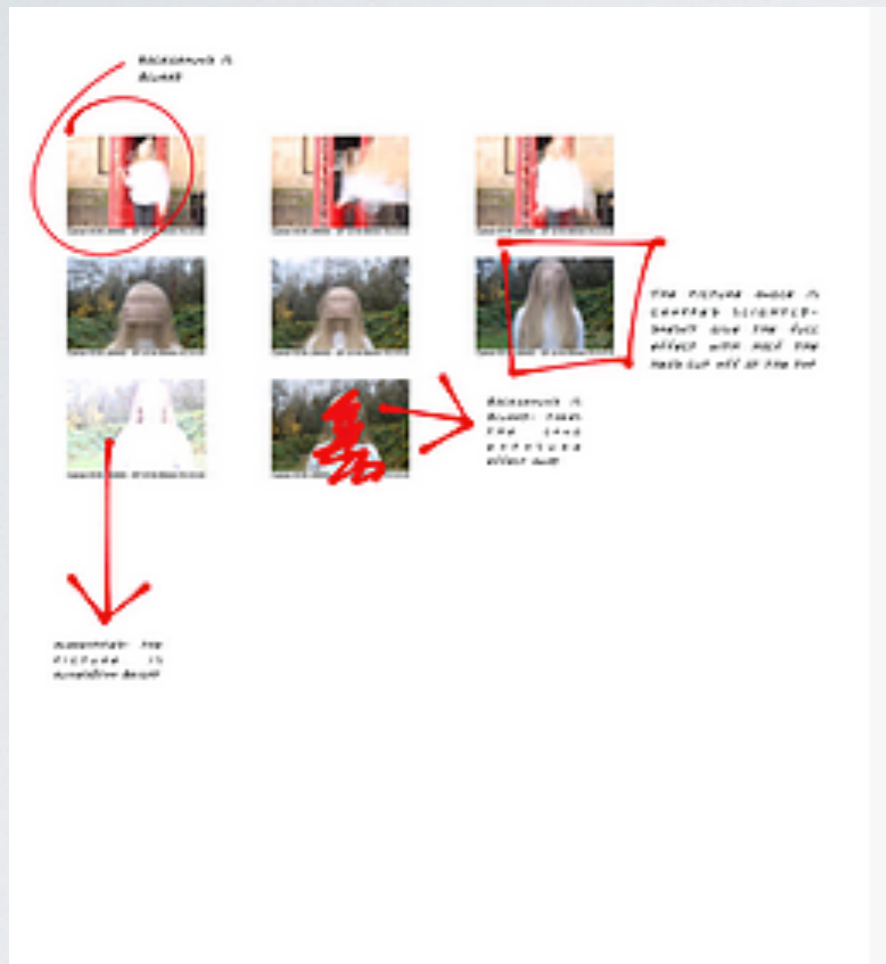


SEE A&D WEBSITE FOR STUDENT GALLERY EXAMPLES



SEE A&D WEBSITE FOR STUDENT GALLERY EXAMPLES

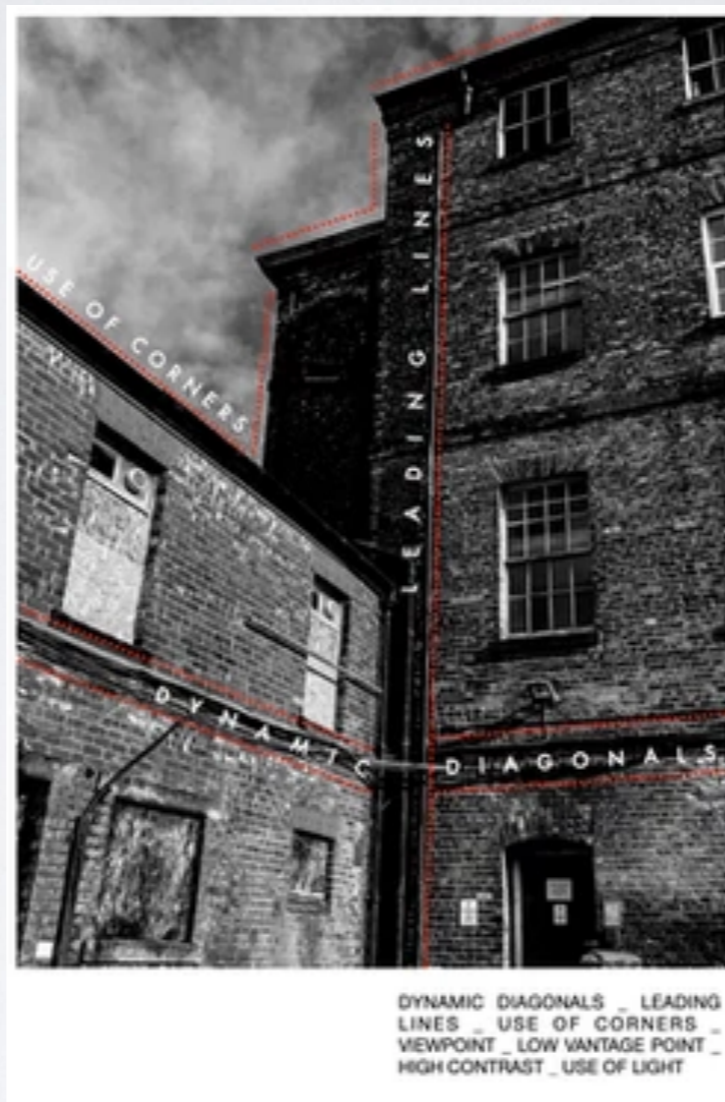
CONTACT SHEET EXAMPLES



AN ALTERNATIVE TO MAKING A DIGITAL CONTACT SHEET, IS TO PRINT IT OUT AND ANNOTATE BY HAND, THEN SCAN THE CONTACT SHEET TO SAVE AND LATER UPLOAD TO YOUR WEBSITE

SEE A&D WEBSITE FOR STUDENT GALLERY EXAMPLES

ANNOTATION EXAMPLES



SEE A&D WEBSITE FOR STUDENT GALLERY EXAMPLES



LEADING LINES _ PERSPECTIVE _
 DISTRACTING ELEMENT _
 CONTRAST _ DEEP DEPTH OF
 FIELD _ DETAIL _ REPETITION



DYNAMIC DIAGONALS _
 PERSPECTIVE _ VANTAGE POINT _
 DISTRACTING ELEMENTS



USE OF CORNERS _ PERSPECTIVE _
 DETAIL _ HIGH CONTRAST _ DEEP
 DEPTH OF FIELD

SEE A&D WEBSITE FOR STUDENT GALLERY EXAMPLES



LEADING LINES_ CONTRAST_ PERSPECTIVE



LOW VANTAGE POINT_ LEADING LINES_ USE OF CORNERS_ PERSPECTIVE



LEADING LINES_ TEXTURE_ CONTRAST

SEE A&D WEBSITE FOR STUDENT GALLERY EXAMPLES

PHOTOSHOP DEVELOPMENT EXAMPLES



SEE A&D WEBSITE FOR STUDENT GALLERY EXAMPLES



SEE A&D WEBSITE FOR STUDENT GALLERY EXAMPLES

A&D 2021